

A stylized profile of a person's head and neck in white and blue. A blue and orange tube, representing the esophagus, is shown entering the mouth and curving down. The background is a gradient of light blue to dark blue.

DO YOU HAVE A LONG-TERM EoE MANAGEMENT APPROACH?

Address the underlying
type 2 inflammation in EoE

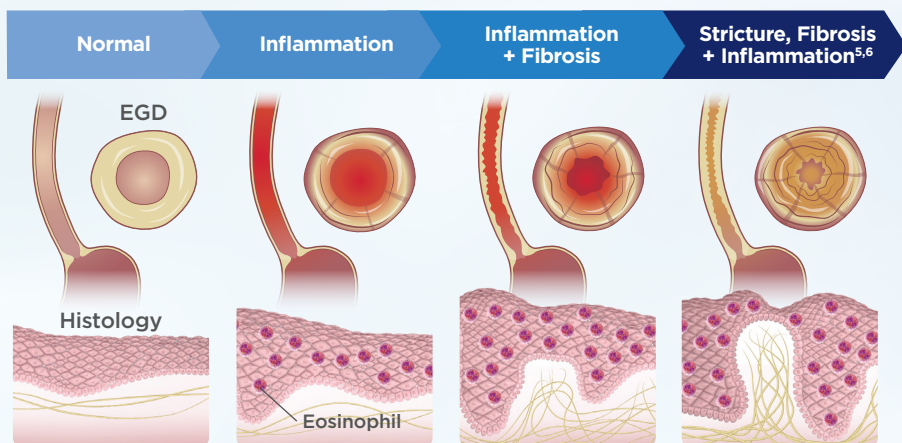
EoE, eosinophilic esophagitis.

PERSISTENT INFLAMMATION: THE UNSEEN THREAT

EoE is a **chronic type 2 inflammatory disease** that significantly impacts caregiver burden and affects a patient's quality of life (eg, avoiding eating around others due to stress and anxiety).¹⁻³

Underlying type 2 inflammation is a key driver of disease progression⁴

Uncontrolled type 2 inflammation **can lead to progression and long-term complications**, including tissue remodeling, stricture, and fibrosis.^{4,5}



EGD, esophagogastroduodenoscopy.

Even in the absence of symptoms, the underlying type 2 inflammation can still be present⁷

- Symptoms don't always correlate with histology. If the underlying inflammation is not assessed, the risk of undetected recurrence can increase⁷
- Patients may also develop adaptive behaviors, which can mask symptoms and delay inflammation control, increasing the risk of complications^{8,9}

EoE REQUIRES A LONG-TERM MANAGEMENT APPROACH¹⁰

Focus on these 3 key areas of disease for comprehensive management¹⁰



Symptoms



Histology



Endoscopic appearance

To manage a chronic condition like EoE, you need a long-term plan¹⁰

If you're relying on an episodic approach to EoE, the risk of recurrence and disease progression increases. **That's why continuous treatment is important to help with continued response.**¹⁰

Assess treatments to confirm response and disease control

Many patients don't respond adequately to common therapies like PPIs and TCS, or lose response later on.^{11,12}

~50%

of patients on PPIs did not achieve histologic remission¹¹

Based on 33 studies of 619 patients

~67%

of patients on TCS showed histologic relapse despite continuous treatment¹²

n=58/82

Regularly monitor patients with endoscopic follow-ups to confirm continued response and the absence of disease activity¹⁰

PPI, proton pump inhibitor; TCS, topical corticosteroid.

EoE REQUIRES LONG-TERM COMPREHENSIVE MANAGEMENT



Aim for Long-Term Remission

Continuous treatment of a chronic disease helps control inflammation and prevent disease progression¹⁰



Address the Underlying Inflammation

Implement a management approach that addresses a key driver of disease progression in EoE—underlying type 2 inflammation⁴



Monitor and Manage Long-Term

Assess treatment response to therapy and consider incorporating periodic endoscopy with biopsy to ensure maintenance of remission¹⁰

References: **1.** Lucendo AJ, Molina-Infante J, Arias Á, et al. Guidelines on eosinophilic esophagitis: evidence-based statements and recommendations for diagnosis and management in children and adults. *United European Gastroenterol J.* 2017;5(3):335-358. **2.** Pokrzywinski RM, Harding G, Brooks A, Goodwin B, Williams J. Documenting the journey of patients with eosinophilic esophagitis and the impact of the disease on patients and their caregivers: a cross-sectional, qualitative research study. *Adv Ther.* 2020;37(10):4458-4478. **3.** de Rooij WE, Evertsz FB, Lei A, Bredenoord AJ. General well-being and coping strategies in adult eosinophilic esophagitis patients. *J Neurogastroenterol Motil.* 2022;28(3):390-400. **4.** Chehade M, Falk GW, Aceves S, et al. Examining the role of type 2 inflammation in eosinophilic esophagitis. *Gastro Hep Adv.* 2022;1(5):720-732. **5.** Cheng E, Souza RF, Spechler SJ. Tissue remodeling in eosinophilic esophagitis. *Am J Physiol Gastrointest Liver Physiol.* 2012;303(11):G1175-G1187. **6.** Dellon ES, Hirano I. Epidemiology and natural history of eosinophilic esophagitis. *Gastroenterology.* 2018;154(2):319-332. **7.** Safroneeva E, Straumann A, Schoepfer AM. Latest insights on the relationship between symptoms and biologic findings in adults with eosinophilic esophagitis. *Gastrointest Endosc Clin N Am.* 2018;28(1):35-45. **8.** Gomez Torrijos E, Gonzalez-Mendiola R, Alvarado M, et al. Eosinophilic esophagitis: review and update. *Front Med (Lausanne).* 2018;5:247. doi:10.3389/fmed.2018.00247 **9.** Schoepfer AM, Safroneeva E, Bussmann C, et al. Delay in diagnosis of eosinophilic esophagitis increases risk for stricture formation in a time-dependent manner. *Gastroenterology.* 2013;145(6):1230-1236.e62. **10.** Aceves SS, Alexander JA, Baron TH, et al. Endoscopic approach to eosinophilic esophagitis: American Society for Gastrointestinal Endoscopy Consensus Conference. *Gastrointest Endosc.* 2022;96(4):576-592.e1. **11.** Lucendo AJ, Arias A, Molina-Infante J. Efficacy of proton pump inhibitor drugs for inducing clinical and histologic remission in patients with symptomatic esophageal eosinophilia: a systematic review and meta-analysis. *Clin Gastroenterol Hepatol.* 2016;14(1):13-22. **12.** Greuter T, Godat A, Ringel A, et al. Effectiveness and safety of high- vs low-dose swallowed topical corticosteroids for maintenance treatment of eosinophilic esophagitis: a multicenter observational study. *Clin Gastroenterol Hepatol.* 2021;19(12):2514-2523.e2.

sanofi | REGENERON®

